

ADVAN

Love Driving.

Tyres for adults who love the open road, and the feel of a high-performance machine.
ADVAN. The sum total of Yokohama Rubber's uncompromising passion and the leading edge of an ongoing evolution.



New
ADVAN Sport V105



YOKOHAMA

*Original Equipment

Pattern: ADVAN Sport(V103)
PORSCHE 911 Carrera 4 / Cayenne **Mercedes-Benz** C63AMG / M63AMG / C-Class
AUDI S8 / Q7 / A7 **BENTLEY** Continental GT / Continental GTC / Continental Flying Spur

Pattern: ADVAN Sport V105
Mercedes-Benz GLS-class / SLK-Class / C-Class / B-Class / A-Class / CLA-Class

Yokohama India Pvt. Ltd.
 20th Floor, DLF Building No.5, Tower C, DLF Cyber City, Phase 3, Gurgaon, Haryana -122 002.
 Ph. No.: 0124-6179700. Fax No.: 0124-6179800. customercare@yokohama-india.com. www.yokohama-india.com



*GLOBAL

The Best Performing Street Tyre.

AVAILABLE SIZES

Inch	Series	Size	LISS
17	45	225/45 R17	91W
17	45	245/45 ZR17	99Y
18	55	255/55 R18*	109Y
18	45	245/45 ZR18	100Y
18	45	255/45 ZR18	103Y
18	40	245/40 ZR18	97Y
19	50	255/50 R19*	107Y
19	45	235/45 ZR19*	(95Y)
19	45	245/45 ZR19	98Y
19	40	255/40 ZR19	(100Y)
19	40	275/40 ZR19	(105Y)
19	35	235/35 ZR19	(91Y)
19	35	255/35 ZR19	(96Y)
19	30	285/30 ZR19	(100Y)

*Coming Soon

ADVAN Sport V105

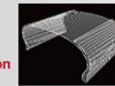
Pattern No. V105S



Handles Precisely as Intended

Matrix Body Ply Structure Enhances Steering Stability

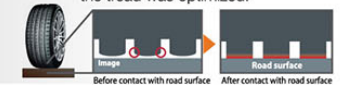
Improves precision in steering without compromising comfort. Contributes to excellent performance in the dry by conveying power to the roads surface.



High-rigidity rayon carcass material

Mound Profile Enhances Steering stability

With Mound Profile [ADVAN Sport V105]
 In order for the ground contact pressure to be proportionate when making contact with the road surface, the cross-sectional shape of the tread was optimized.



Strong Grip Performance

Powerful Grip in the dry and Outstanding Hydroplaning Resistance

Asymmetrical Pattern Strengthens Wet & Dry Performance



*This diagram is a conceptual image.

New Compound Jointly Developed with one of the World's Leading Automakers

Achieves enhanced grip performance through Microsilica + Silica dispersed material.

Microsilica + Silica dispersed material
 Well-dispersed silica control excessive heat for wet grip and long mileage.



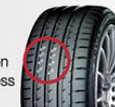
Silica dispersed material is between Silica and Polymer

A Quiet & Comfortable Ride

Reduces external rolling noise

Noise Reduction Technology Silent Sipe

These thin slits positioned on the inside of the ribs suppress external vehicle noise



Asymmetrical Pitch Variation

Optimizes pitch on the inside and outside of the tyre to achieve both enhanced maneuverability and quietness.